



Key Features

- Stylish low-profile faceplate with magnetic attachment, seven colors and three styles available.
- Integrated mounting wings for easy installation.
- Full color TFT LCD to display custom buttons, text, graphics, animations, and video.
- Display composite or S-video either full screen or in an adjustable size window.
- Integrated 10/100Base-T Ethernet port.
- Adjustable backlight brightness.
- Light sensor for automatic backlight level.
- Stereo speakers for custom sound effects.
- Plasma friendly infrared receiver for command pass-through.
- IR output port drives up to 1,000 feet of wire.
- Two power status input ports.
- Completely customizable and programmable.
- Optional 'Voltage' and 'Video' sensing modules to monitor power status of equipment when used with certain RTI processors.
- Capable of two-way RS-232 control when used with certain RTI accessory devices.
- Non-volatile Flash memory stores your program even when power is lost.
- Field upgradable firmware.
- USB and Ethernet programming.

K4 In-Wall Controller

The K4 is a color LCD touchpanel for flush-mount installations in walls or cabinets. It provides a self-contained control system for controlling audio/video components, lights, or other electronic systems in the home. It also displays composite video, motion JPEG, and web pages – either full screen or in an adjustable window.

The K4 has it all – it's the first standalone touchpanel with infrared control, video monitoring, and Ethernet connectivity. With a TFT LCD, full VGA resolution, powerful 400MHz 32-bit MCU, 32MB of memory, stereo speakers, and an infrared receiver, the K4 takes touchpanel control to new heights.

Description

The K4 is an advanced universal system controller that mounts in a wall. Its design maintains the perfect balance between display size and resolution. At 6.4 inches, the LCD is small enough to blend into a room's interior, yet it provides the full VGA resolution necessary for displaying video windows and web pages. The K4 interface is fully programmable using RTI's Integration Designer® Software, making it easy to display custom buttons, text, graphics, and animations.

The K4 can directly control almost any audio/video component or lighting system up to 1000 feet away using its infrared output port. In addition, the built-in Ethernet port allows the K4 to display video from the network security cameras, access the Internet, view and play songs stored on hard drive music servers, and control other devices on the network. A video card provides the ability to digitize composite or S-video for full screen or scalable viewing on any control page.

The K4 can be used as a standalone device or as a part of an expandable central control system. When used with the available RTI accessory devices, the K4 is capable of infrared routing, relay control, power sensing, and two-way RS-232 communications for advanced control.

Call 952-253-3100

www.rticorp.com



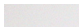


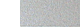
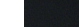
It's Under Control®

Specifications

Power.....	+9VDC to +16VDC, 1A max
Power Management.....	Adjustable backlight brightness/power down time
Touchscreen Display.....	High-brightness color TFT LCD
.....	Full VGA (640x480 pixels) with 65K colors
.....	300:1 contrast ratio
.....	Integrated high-resolution resistive touchscreen
Display Size.....	6.4 in (162mm) diagonal
Display Backlight.....	Dual CCFL, 300nit
Infrared Output Port.....	200mA output
.....	Drives up to 1000 ft (300 m) of wire
Ethernet Port.....	10/100Base-T
Operating Temperature.....	+32°F to +122°F (0°C to +50°C)
Operating Humidity.....	5% to 95% Non-condensing
Total System Memory.....	32M Bytes Flash (non-volatile) memory
Device Capability.....	Total number of devices is limited only by memory
Macro Capability.....	Unlimited steps in a single macro
.....	Total number of macros is limited only by memory
.....	Macro capability on every button
Communications.....	USB programming port
Video Input.....	4 Composite or 2 S-Video BNC Connectors, NTSC/PAL/SECAM
Enclosure.....	Formed steel, black powder coating
Front Plate.....	High-impact molded ABS plastic
Mounting.....	Integrated mounting wings, or screws through front bezel
Installation Cut-Out (W x H).....	8.25 in (210mm) x 5.5 in (140mm)
Total Depth in Wall.....	2.25 in (57mm)
Weight.....	2.6 lbs (1180g)
Warranty.....	One Year (Parts & Labor)

All specifications subject to change without notice

Contemporary Bezel Colors

White BZW-K4-CO	Almond BZA-K4-CO	Ivory BZI-K4-CO	Silver BZS-K4-CO	Black BZB-K4-CO
				



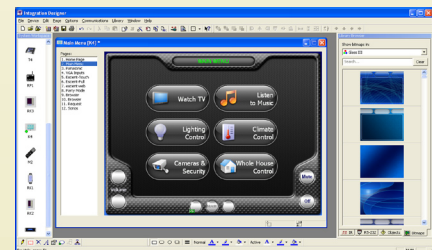
Accessories

PS16-1	Power Supply
CB-8	Touchpanel Connecting Block
PCB-K4	Pre-Construction Bracket
BB-K4	Pre-Construction Conduit Box
ZRP-5	Remote Control Processor
ZRP-6	Remote Control Processor
XP-8	Advanced Control Processor
CPB-1	Control Port Connecting Block
RCM-12	Relay Control Module
ECB-5	IR Emitter Connecting Block
viRsa Mouse	IR Emitter
CM-232	RS-232 Communication Module
VPS-1	Voltage Power Sensor
SPS-1	Video Sync Power Sensor



Other RTI Products

T1-B	Universal System Controller
M2	Universal System Controller
T2-B	Universal System Controller
T2-Cs	Universal System Controller
T2-C	Universal System Controller
T3-V	Universal System Controller
T4	Universal System Controller
U1	Weather Resistant Controller
U2	Weather Resistant Controller
RKM-1	In-Wall Multi-Room Audio Keypad
RK1	In-Wall Keypad Controller
RK2	In-Wall Touchscreen Controller
RK3-V	In-Wall Touchscreen Controller
IR-PRO	Infrared Capture System



Integration Designer® Programming Software

5775 12th Avenue East, Suite 180, Shakopee, MN 55379
PH: (952) 253-3100 • Website: www.rticorp.com

RTI
It's Under Control®