



Key Features

- Stylish low-profile bezel available in 5 colors (white, almond, ivory, silver, black)
- Available with gray or black faceplate and buttons.
- Integrated mounting wings for easy installation.
- Full color TFT LCD to display custom buttons, text, graphics and animations.
- Integrated 10/100Base-T Ethernet port with Power-over-Ethernet.
- Plasma friendly infrared receiver for command pass-through.
- IR output port drives up to 1,000 feet of wire.
- Two power status input ports.
- Integrated high-resolution touchscreen.
- Powerful 32-bit, 200MHz XScale processor.
- 32MByte of Flash Memory.
- Extremely bright, backlit display and keys with adjustable brightness.
- Nine assignable/programmable keys.
- Completely customizable and programmable.
- Non-volatile Flash Memory stores your program even when power is lost.
- Field upgradable firmware.
- USB and Ethernet programming.

RK3 In-Wall Controller

The RK3 is a compact color LCD touchpanel designed for flush-mount installations in walls or cabinets. It provides a self-contained control system for controlling audio/video components, lights, or other electronic systems in the home. It also displays digital video (motion JPEG) and web pages – either full screen or in an adjustable window.

The RK3 provides elegant and intuitive control of a home's entertainment, environment, security, and information systems. It is the only compact in-wall touchpanel that provides both direct infrared control and 10/100Base-T Ethernet for IP control. In addition, the RK3 is unique because its graphical user interface (GUI) and programming are completely customizable. In any situation, from simple to complex, the RK3 provides the perfect level of control.

Description

The RK3 is an advanced universal system controller that mounts in a wall. Its design maintains the perfect balance between display size and resolution. At 3.5 inches the LCD is small enough to blend into a room's interior, yet it provides the necessary resolution for displaying graphics such as digital photos, web pages, and CD cover artwork. The RK3 interface is fully programmable using RTI's Integration Designer® software, making it easy to display custom buttons, text, graphics, and animations.

The RK3 can directly control almost any audio/video component or lighting system up to 1000 feet away using its infrared output port. In addition, the built-in Ethernet port allows the RK3 to display video from network security cameras, access the internet, view and play songs stored on hard drive music servers, and control other devices on the network.

The RK3 can be used as a stand-alone device or as a part of an expandable central control system. When used with the available RTI accessory devices, the RK3 is capable of infrared routing, relay control, power sensing, and two-way RS-232 communications for advanced control.

Call 952-253-3100

www.rticorp.com



It's Under Control®

Specifications

Power.....	+9VDC to +16VDC, .5A max or 802.3af Power-over-Ethernet
Power Management	Adjustable backlight brightness/power down time
Touchscreen Display.....	High-brightness color TFT LCD
.....	1/4 VGA (240x320 pixels) with 65K colors
.....	Integrated high-resolution resistive touchscreen
Display Size	3.5 in (89mm) diagonal
Backlights	White LED (Display), Blue/Amber LED (Keypad)
Infrared Output Port.....	200mA output
.....	Drives up to 1000 ft (300 m) of wire
Ethernet Port	10/100Base-T with Power-over-Ethernet
Operating Temperature	+32°F to +122°F (0°C to +50°C)
Operating Humidity.....	5% to 95% Non-condensing
Total System Memory.....	32M Bytes Flash (non-volatile) memory
Device Capability.....	Total number of devices is limited only by memory
Macro Capability.....	Unlimited steps in a single macro
.....	Total number of macros is limited only by memory
.....	Macro capability on every button
Communications.....	USB programming port
Enclosure.....	High-impact molded ABS plastic, black
Front Plate	High-impact molded ABS plastic, gray or black
Mounting.....	Integrated mounting wings, or screws through front bezel
Front Plate Dimensions (H x W)	5 3/4 in (146mm) x 5 1/2 in (140mm)
Installation Cut-Out (H x W).....	5 1/8 in (130mm) x 4 3/4 in (120mm)
Total Depth in Wall	1 1/8 in (29mm) plus cables
Weight	10 oz (284 g)
Warranty	One Year (Parts & Labor)

All specifications subject to change without notice



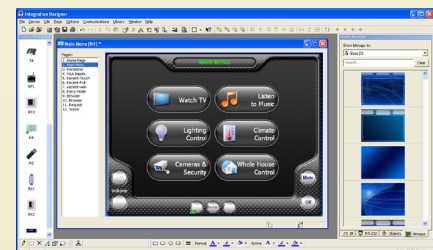
Accessories

PS16-1	Power Supply
CB-4/CB-8	Touchpanel Connecting Block
PCB-K3	Pre-Construction Bracket
BB-K3	Pre-Construction Conduit Box
ZRP-6	Remote Control Processor
MRP-64	Multi-Room Control Processor
XP-8	Advanced Control Processor
RCM-12	Relay Control Module
ECB-5	IR Emitter Connecting Block
CM-232	RS-232 Communication Module
VPS-1	Voltage Power Sensor
SPS-1	Video Sync Power Sensor



Other RTI Products

T1-B	Universal System Controller
M2	Universal System Controller
T2-B	Universal System Controller
T2-Cs	Universal System Controller
T2-C	Universal System Controller
T3-V	Universal System Controller
T4	Universal System Controller
U1	Weather Resistant Controller
U2	Weather Resistant Controller
RKM-1	In-Wall Multi-Room Audio Keypad
RK1	In-Wall Keypad Controller
RK2	In-Wall Touchscreen Controller
K4	In-Wall Touchscreen Controller
IR-PRO	Infrared Capture System



Integration Designer® Programming Software