



## Key Features

- Powerful 32-bit, 200MHz XScale® processor.
- 32MByte of non-volatile Flash memory.
- Front panel controls/display (11 Buttons for front panel control).
- Two USB ports.
- Eight multi-purpose I/O ports.
- Eight programmable relay outputs.
- Eight two-way RS-232 ports.
- Eight sense inputs.
- I/O ports are compatible with industry standard IR emitters, blasters, and repeater systems.
- All output ports incorporate both short-circuit and overload protection.
- Variable IR output on all ports.
- I/O ports support all optional RTI power sensing and communications modules.
- Programmed using the Integration Designer® Software.
- Non-volatile Flash memory stores your system configuration even when power is not present.
- Field upgradable firmware.
- USB and Ethernet programming.
- Input for connection of multiple RF receiver modules.
- RS-485 communications port for future expansion.
- Astronomical clock built in.
- Rack mountable or free standing.

## XP-8 Advanced Control Processor

The XP-8 is a high-end remote control processor for automating the operation of electronic systems in homes and office buildings. The combination of a blazing fast MPU, real time/multitasking operating system, and tremendous expandability make the XP-8 the perfect solution for large-scale and complex projects.

## Description

The XP-8 provides an unmatched value with its powerful features and ease of programmability, offering an advanced level of control typically only found on more expensive processors. The XP-8 offers an abundance of advanced control interface options such as two-way RS-232, routable IR, relay control and Ethernet, ideal for large-scale and more advanced projects. Additionally, the XP-8 incorporates an astronomical clock, allowing for time based events or commands.

Like other RTI processors, the XP-8 has been designed to interface seamlessly with all RTI remote controls and touchpanels. The XP-8 has 8 multi-purpose I/O ports that accept standard IR emitters and repeater systems with variable IR output. These multi-purpose ports also support optional video/voltage sensing modules, allowing for expanded integration capabilities. The XP-8 also features eight programmable relay input/outputs, eight sense inputs, eight two-way RS-232 ports and an RS-485 jack for expansion purposes. Unlike simple IR-to-RF converters, the XP-8 creates central storage for all system commands. With these interface and control options, the XP-8 provides an almost unlimited arsenal of control capabilities.

Call 952-253-3100

[www.rticorp.com](http://www.rticorp.com)



It's Under Control®

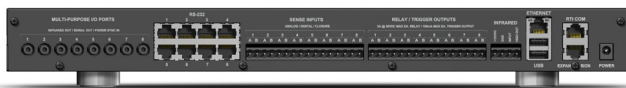
## Specifications

Power Supply .....	+12VDC, 1A
Multi-Purpose Output Ports .....	Eight custom 3.5mm 4-conductor jacks
.....	Designed for RTI modules as well as industry-standard IR emitters.
IR Output Drive .....	100mA maximum (per port, adjustable)
.....	200mA maximum (high IR output port)
Infrared Frequency Transmission Range .....	15kHz - 460kHz
Infrared Input .....	Compatible with industry-standard repeaters and receivers
Relays .....	Eight, 3 Amps @ 30 VDC or 12V/100mA Trigger
Sense Inputs .....	Eight, Analog/Digital/Closure
RS-232 Ports .....	Eight, RJ45 Connections
Ethernet Port .....	10/100Base-T
USB Ports .....	Two Host, 1 Programming
Expansion Port .....	RS-485 / IR / PWR
Memory Expansion .....	SD/MM Card Slot
Display .....	High-contrast STN LCD
Display Size (H x W) .....	0.7 in x 2.8 in (18mm x 60mm)
.....	32h x 122w pixels
Backlights .....	Blue LED (Display/Keypad)
Mounting .....	Rack-mount or free standing
Dimensions (W x H x D) .....	17 in (432mm) x 1.7 in (43mm) x 6.4 in (162mm)
Weight .....	4 lb. (1814g)
Warranty .....	One Year (Parts & Labor)

All specifications subject to change without notice



Front view - cover removed



Rear view

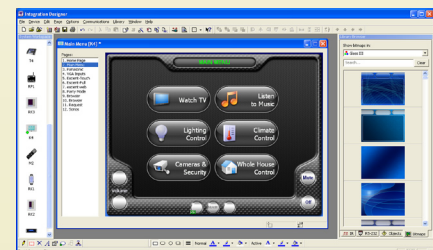
## Accessories

<b>RM-433</b>	<b>RF Receiver</b>
<b>ZM-24</b>	<b>2.4GHz Zigbee® Transceiver Module</b>
<b>CB-4/CB-8</b>	<b>Touchpanel Connecting Block</b>
<b>RCM-12</b>	<b>Relay Control Module</b>
<b>ECB-5</b>	<b>IR Emitter Connecting Block</b>
<b>CM-232</b>	<b>RS-232 Communication Module</b>
<b>VPS-1</b>	<b>Voltage Power Sensor</b>
<b>SPS-1</b>	<b>Video Sync Power Sensor</b>



## Other RTI Products

<b>T1-B</b>	<b>Universal System Controller</b>
<b>M2</b>	<b>Universal System Controller</b>
<b>T2-B</b>	<b>Universal System Controller</b>
<b>T2-Cs</b>	<b>Universal System Controller</b>
<b>T2-C</b>	<b>Universal System Controller</b>
<b>T3-V</b>	<b>Universal System Controller</b>
<b>T4</b>	<b>Universal System Controller</b>
<b>U1</b>	<b>Weather Resistant Controller</b>
<b>U2</b>	<b>Weather Resistant Controller</b>
<b>RKM-1</b>	<b>In-Wall Multi-Room Audio Keypad</b>
<b>RK1</b>	<b>In-Wall Keypad Controller</b>
<b>RK2</b>	<b>In-Wall Touchscreen Controller</b>
<b>RK3</b>	<b>In-Wall Touchscreen Controller</b>
<b>K4</b>	<b>In-Wall Touchscreen Controller</b>
<b>IR-PRO</b>	<b>Infrared Capture System</b>



Integration Designer® Programming Software